



# New American Paintings

JURIED EXHIBITIONS-IN-PRINT

158

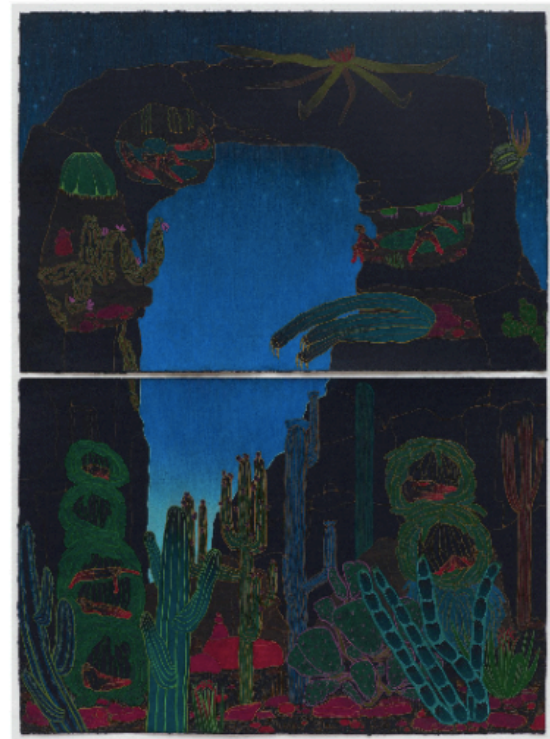
INTRODUCING 40  
EXCEPTIONAL  
ARTISTS

Selections by  
**BILL POWERS**  
Owner, Half Gallery

February/March



Lydia Baker  
Another Day | colored pencil and wax pastel on paper, 40 x 30 inches



Lydia Baker  
Strawberry Legs | colored pencil on paper, 30 x 22 inches





**Lydia Baker**

Electric Forest | colored pencil on paper, 26 x 40 inches

## Lydia Baker

New York, NY

[lydiabaker@gmail.com](mailto:lydiabaker@gmail.com) / [www.lydiabaker.com](http://www.lydiabaker.com) / [@lydia\\_k\\_baker\\_arts](https://www.instagram.com/lydia_k_baker_arts)

b. 1990 Norfolk, VA

### Education

- 2020 MFA, New York Academy of Art, New York, NY
- 2013 BFA, Virginia Commonwealth University, Richmond, VA

### Residencies

- 2021 Constance Saltonstall Foundation, Ithaca, NY
- High Line Nine x Sugarlift, New York, NY

### Solo Exhibition

- 2022 Massey Klein Gallery, New York, NY

### Two-Person Exhibitions

- 2021 *Exit Point* (with Angela Gram), Sugarlift Gallery, New York, NY

### Group Exhibitions

- 2021 Art Basel Miami, w/ Chubb Insurance, Miami Beach, FL
- Artists for Artists, Sotheby's, New York, NY
- Chubb Fellows Exhibition, Wilkinson Gallery, New York Academy of Art, New York, NY
- 2020 *The Feminine Agenda*, Womenswork.Art Gallery, Poughkeepsie, NY

### Awards

- 2021 City Artist Corps Grant, NYFA, DCLA, MOME, and Queens Theatre
- 2020-21 The Chubb Fellowship, New York Academy of Art, New York, NY
- 2020 Art Heals Grant, R&F Handmade Paints and International Encaustic Artists

### Publications

- 2021 *Friend of the Artist 14*
- Artsin Square*, no. 1
- ArtMaze Magazine*, no. 22

A need for a constructive escapism led me to create my current body of work, which simultaneously explores ideas of sanctuary, harmony, and the unknown. As I draw with colored pencils on paper, I immerse myself in a women-centered world, savoring the landscape and the pendulum between curiosity and stability. I consider the imagined environments to be a resting place after conflict—ripe for new growth and possibility. My drawings float between the internal and the external—the intuitive and the concrete—as the landscape echoes the interior of a body, and the figures explore, adapt, and plant themselves firmly.

